

Iran, Tehran, Motahari st. Fully Automated Parking System



Construction year : 2021
 Employer : Hamtaz Motor
 Main Contractor : Parkolay

Capacity : 59 cars
 System : Parkule 245 , 1 system
 Structure : Freestanding steel structure

CAPACITY

- Building footprint area: 428.4m²
- Building depth: -13.60 m
- Number of parking floors: 4 underground
- Entry-Exit & Lobby: -1 floor
- Equipped with turn-table

OPERATION

- Operation without personnel.
- Ventilation and lighting savings (No exhaust gas formation, no people inside the parking space)
- High insurance availability thanks to high safety level
- Remote access over the internet.

PERFORMANCE

- 1 Entry-Exite room
- Shortest parking time: 30 sec.
- Longest parking time: 150 sec.

COMFORT

- Assigned special parking space for office personnel.
- Parking without manoeuvring difficulties and without using inconvenient ramps and corridors for getting to/exiting from the parking floors and for parking.
- Safe and secure parking away from risks such as theft, accidents, etc.

STANDARDS

- EN 14010 - CE Certificate (CE: "European Conformity")

SAFETY

- 2006/42/EC Machinery Directive

EN 14010 Safety of machinery - Equipment for power driven parking of motor vehicles
 Safety and EMC requirements for design, manufacturing, erection and commissioning stages

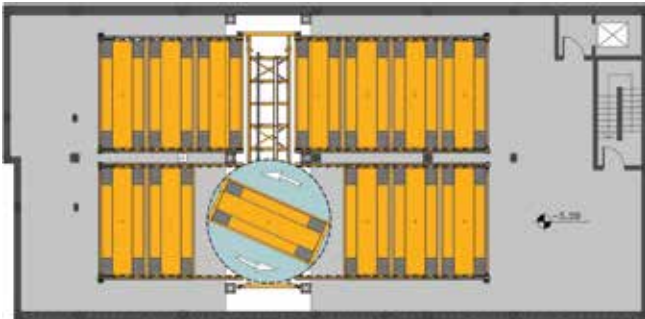
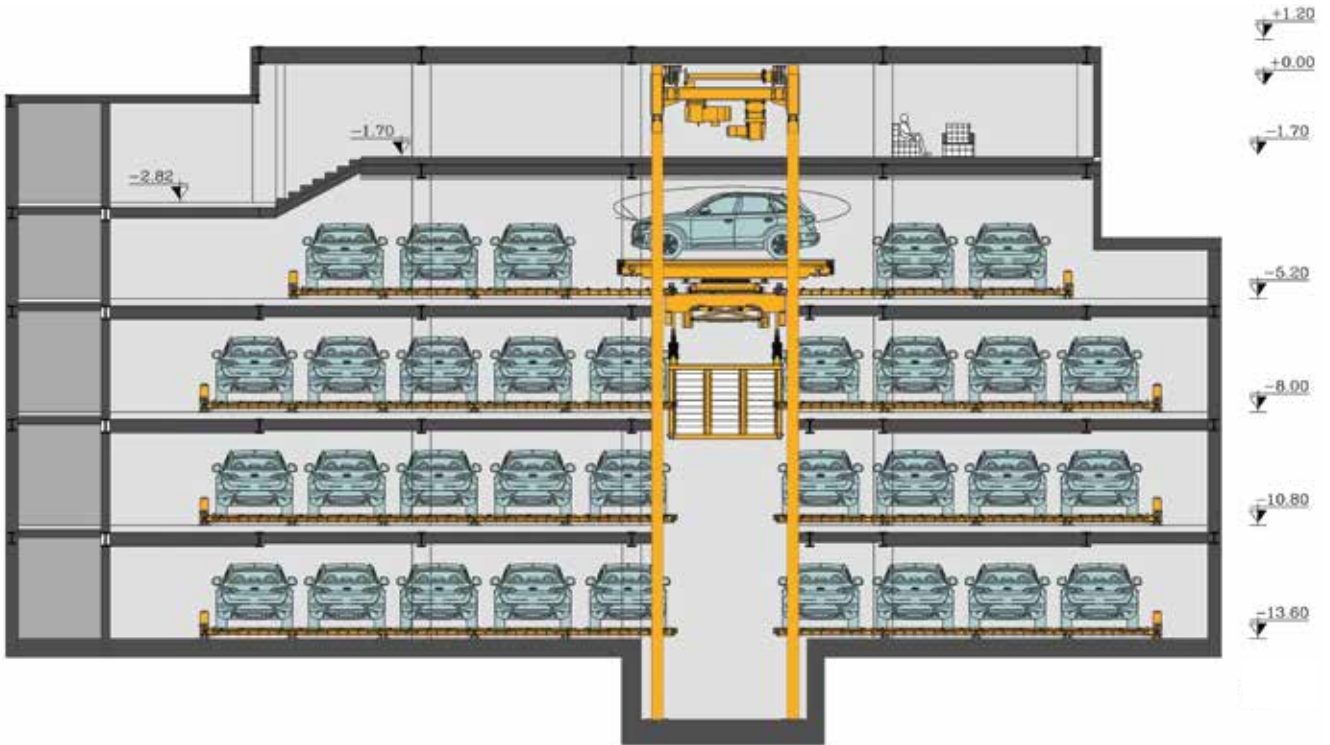


Standart : EN 14010



Hamtaz , Fully Automated Parking System

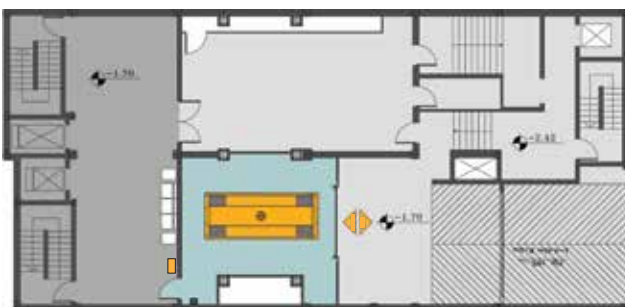
Technical Specifications



◇ Parking floor plan - turning level



◇ Parking floor plan



◇ Entrance floor plan

- ◇ separate car and people route
- ◇ compatible with fire terms
- ◇ drive in/out forwards
- ◇ adapting to the unique building necessities and constraints.
- ◇ minimum personnel requirements
- ◇ ventilation, lighting and energy savings.
- ◇ high security and safety level allowing for less insurance cost.
- ◇ optimal parking and retrieval time
- ◇ safe and secure parking away from risks such as theft, accident, etc.
- ◇ suitable for disabled people, easy parking at the large entry room.